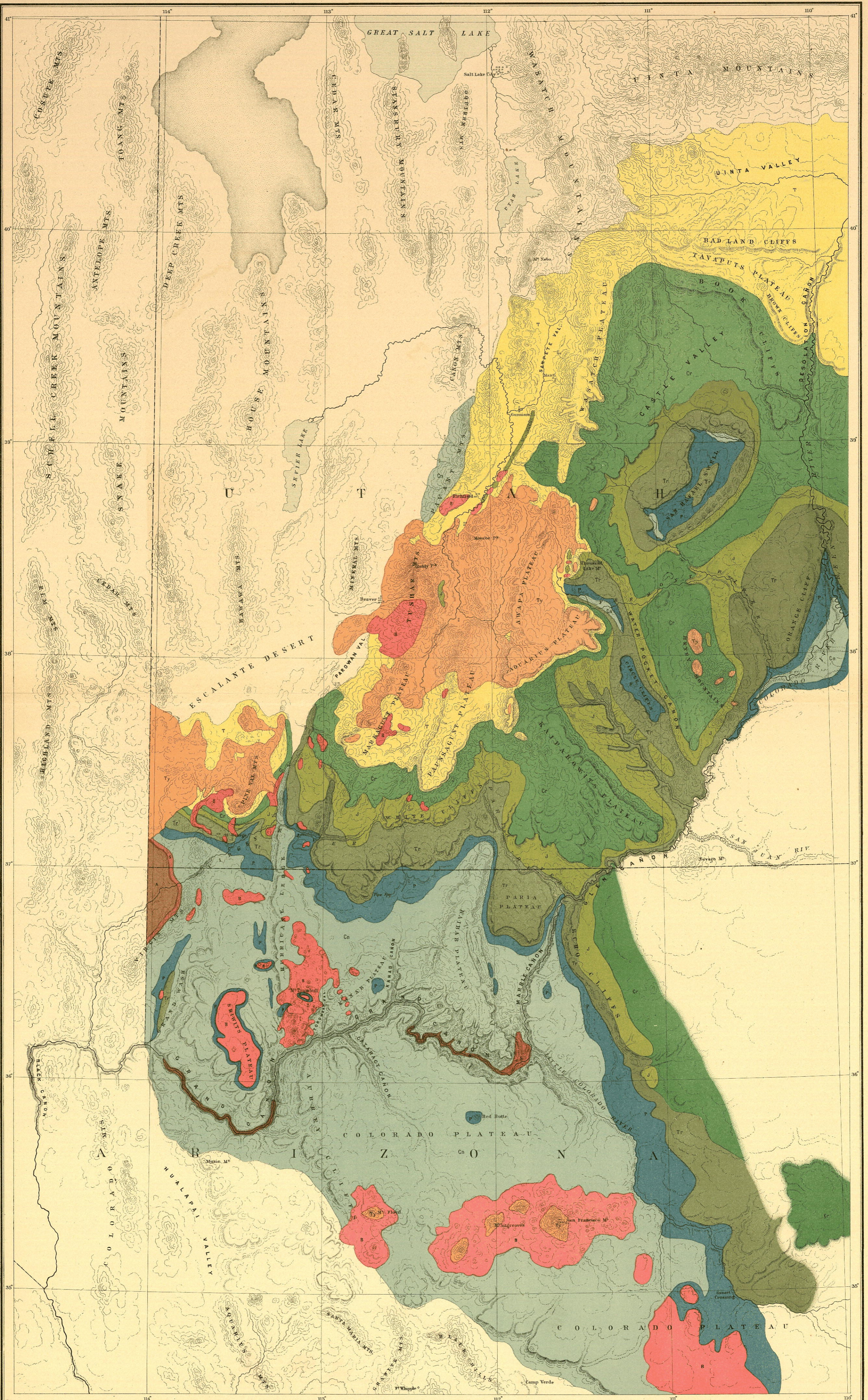


GEOLOGICAL MAP OF THE WESTERN PART OF THE PLATEAU PROVINCE

U.S. GEOLOGICAL SURVEY

GEOLOGY OF THE GRAND CAÑON DISTRICT



J. H. Rensshaw, Del.

Julius Ben. lith. N.Y.

Geology by C. E. DUTTON, Geologist-in-Charge.

Tertiary	Cretaceous	Jurassic	Trias	Permian	Carboniferous	Silurian	Archean	Trachyte Rhyolite & Andesite	Basalt
T	C	J	Tr	P	Cn	S	A	Ty	B

Scale: 16 miles - 1 inch or 1000000 nearly.